

Williamson County IL

Blairsville	Herrin	Lake Creek	Corinth
Carterville	West Marion	East Marion	Crab Orchard
Grassy	Southern	Creal Springs	Stone Fort

County Operations:

- 155.0700 203.5 Sheriff Dispatch, Repeats 156.0900 (Marion Tower)
- 154.8750 203.5 Sheriff Dispatch, Repeats 156.0900 (Cambria, Pittsburg Towers)
- 39.50000 000.0 Sheriff Old State Sheriff's net
- 159.2550 186.2 Sheriff Williamson County Major Case Squad, Repeats 156.0600

- 154.3700 100.0 Fire County Fire Net, Williamson County FPD, Repeats 154.0100
- 154.0700 000.0 Fire County Fire Dispatch (Southern IL Regional Fire Ops "Coalbelt Fire")
- 154.4450 100.0 Fire County Fire Alternate
- 154.6000 103.5 Fire Tac "Channel 6"

- 155.2200 EMS Williamson County Ambulance Service, County EMS Net
- 155.3400 EMS MERCI 340
- 155.8050 EMS Williamson County Ambulance Service
- 154.5400 EMS Williamson County Ambulance Service

- 155.6100 179.9 EMA EMA Operations, Repeats 158.9700 (PL 203.5 in)
- 155.0850 179.9 EMA EMA Operations, Repeats 153.9050
- 155.0250 000.0 EMA ESMARN
- 45.24000 000.0 EMA EMA Operations
- 45.44000 103.5 EMA EMA State Net
- 155.0550 000.0 LG IREACH

- 453.1000 173.8 Hwy County Highway Department

LTR Trunked System (Used for some County Services):

856.7625 857.7625 858.7625 859.7625 860.7625

Township Highway Departments:

(No township governments, highway maintenance is handled by the Williamson Co. Highway Dept.)

Blairsville	Crab Orchard	Grassy	Southern
Carterville	Creal Springs	Herrin	Stone Fort
Corinth	East Marion	Lake Creek	West Marion

Cities and Villages:

Bush (Police Patrol by Williamson County Sheriff and Hurst PD)

154.0700 000.0 Fire Bush FD, County Fire Net

Cambria

155.3100 LG Cambria PW, PD Local Alternate ("CB-x")

154.0700 000.0 Fire Cambria FD, County Fire Net

Carterville

155.1900 100.0 Police Carterville PD

39.50000 000.0 Police Carterville PD, old State Sheriff Net

154.0700 000.0 Fire Carterville FD, County Fire Net

Colp

(Police Patrol by Williamson County Sheriff)

154.3700 100.0 Fire Williamson County FPD, County Fire Net, Repeats 154.0100

154.0700 000.0 Fire Williamson County FPD, County Fire Local Ops

154.4450 100.0 Fire Williamson County FPD, County Fire Alternate

Crainville

(Police Patrol by Williamson County Sheriff)

154.3700 100.0 Fire Williamson County FPD, County Fire Net, Repeats 154.0100

154.0700 000.0 Fire Williamson County FPD, County Fire Local Ops

154.4450 100.0 Fire Williamson County FPD, County Fire Alternate

458.7625 Data LG Local Utility telemetry

Creal Springs

(Police Patrol by Williamson County Sheriff)

154.0700 000.0 Fire Creal Springs FD, County Fire Net

Energy

154.7250 88.5 LG Energy PW, PD Local Alternate

39.50000 000.0 Police Old State Sheriff Net

154.0700 000.0 Fire Energy FD, County Fire Net

Freeman Spur

(Police Dispatch provided Williamson County Sheriff)

159.1725 Police PD Dispatch by County Sheriff, Repeats 153.8075

154.3700 100.0 Fire Williamson County FPD, County Fire Net, Repeats 154.0100

154.0700 000.0 Fire Williamson County FPD, County Fire Local Ops

154.4450 100.0 Fire Williamson County FPD, County Fire Alternate

Herrin

155.4150 151.4 Police Herrin PD, Repeats 159.0150

151.0025 D351 Fire Herrin FD F1, Repeats 158.9925

151.1225 Fire Herrin FD F2, Repeats 156.2325

154.0700 000.0 Fire Herrin FD, County Fire Net

154.4450 151.4 Fire Local Alternate

158.8200 151.4 LG Public Works

155.0550 000.0 LG IREACH

453.7250 151.4 LG Water Department

152.3825 EMS Southern IL Hospital, Repeats 157.6425

155.3400 151.4 EMS EMS Operations

155.2800 EMS Herrin Hospital

Hurst Hurst PD ("HP-xx")
151.6250 Police Hurst PD, Local Alternate
154.0700 000.0 Fire Hurst FD, County Fire Net ("1900's")
33.98000 000.0 Fire Hurst FD, Old Low band channel
154.6000 000.0 LG Weather Spotters

Johnston City

151.4675 151.4 Police Johnson City PD, Repeats 154.6575
155.4150 151.4 Police Johnston City PD
39.50000 000.0 Police Johnston City PD, old State Sheriff Net
151.4675 203.5 Police Johnson City FD, Repeats 154.6575
154.0700 000.0 Fire Johnston City FD, County Fire Net
154.4450 100.0 Fire Fire Alternate
155.7600 LG Public Works
159.6825 LG Water Department
152.3375 School Johnston City CUSD, repeats 157.5975

Marion

855.2375 D627 Police Marion PD
809.9875 Police Marion PD Tac
39.50000 000.0 Police Old State Sheriff Net
154.1750 136.5 Fire Marion FD, Repeats 150.7900
154.0700 000.0 Fire Marion FD, County Fire Net
154.0700 000.0 Fire Lake Egypt FPD, County Fire Net
453.0375 Fire Lake Egypt FPD, Mobile Extenders
154.9650 136.5 EMA EMA Operations
854.0625 LG Utilities Operations (LTR?)
854.1875 LG Utilities Operations
854.4125 LG Utilities Operations
155.0550 000.0 LG IREACH
155.7150 LG Public Works
173.2750 LG City Utilities
453.0500 LG Marion Housing Authority
155.3400 EMS Marion Memorial Hospital
153.2375 EMS Heartland Regional Medical Center, Repeats 158.4225
155.2200 EMS Lifeline EMS
155.2350 EMS Lifeline EMS
155.3400 EMS Lifeline EMS
152.3150 77.0 EMS Lifeline EMS, Repeats 157.5750
155.1750 186.2 School Laidlaw School Busses
151.9850 Misc Lake Egypt Water District, Repeats 158.1750

Pittsburg

(Police Patrol by Williamson County Sheriff)

154.0700 000.0 Fire Pittsburg VFD, County Fire Net

Spillertown

Spillertown PD ("SP-x")

154.3700 100.0 Fire Williamson County FPD, County Fire Net, Repeats 154.0100
154.0700 000.0 Fire Williamson County FPD, County Fire Local Ops
154.4450 100.0 Fire Williamson County FPD, County Fire Alternate

Stonefort

(Police Patrol by Williamson County Sheriff)

154.3700 100.0 Fire Williamson County FPD, County Fire Net, Repeats 154.0100
154.0700 000.0 Fire Williamson County FPD, County Fire Local Ops
154.4450 100.0 Fire Williamson County FPD, County Fire Alternate

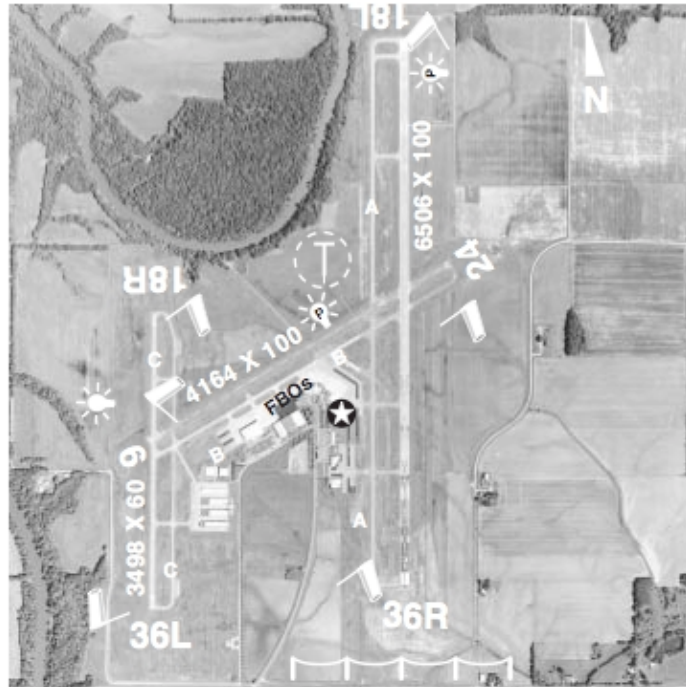
Whiteash (Police Patrol by Williamson County Sheriff)
 154.3700 100.0 Fire Williamson County FPD, County Fire Net, Repeats 154.0100
 154.0700 000.0 Fire Williamson County FPD, County Fire Local Ops
 154.4450 100.0 Fire Williamson County FPD, County Fire Alternate

John A. Logan Community College

153.3875 Police College PD, Repeats 158.3325
 154.8450 D631 Misc Maintenance, Repeats 158.9250
 457.2000 Misc College Operations
 457.2500 Misc College Operations
 457.2750 Misc College Operations
 457.4500 Misc College Operations
 457.6750 Misc College Operations

Williamson County Airport (Marion)

126.9000 Tower / CTAF
 121.7000 Ground Control
 122.9500 Unicom
 119.6750 AWOS
 453.9875 AWOS Link
 127.7000 Approach
 155.9400 Airport Authority



Owned and operated by the Williamson County Airport Authority.

Canadian National Railroad runs N-S thru Marion and Johnston City using 161.1900 (Road 1) and has another line thru the east edge of the county using 160.9200 (Road 2).

Union Pacific Railroad runs thru Hurst, using 160.410 for Road operations.

Crab Orchard & Egyptian Railroad runs at Marion, using 160.3500.

Change Log:

Date	Initials	Items/Page Nr of changed items:
03-01-12	rc	Johnson City PD
10-06-12	rc	Minor updates thruout