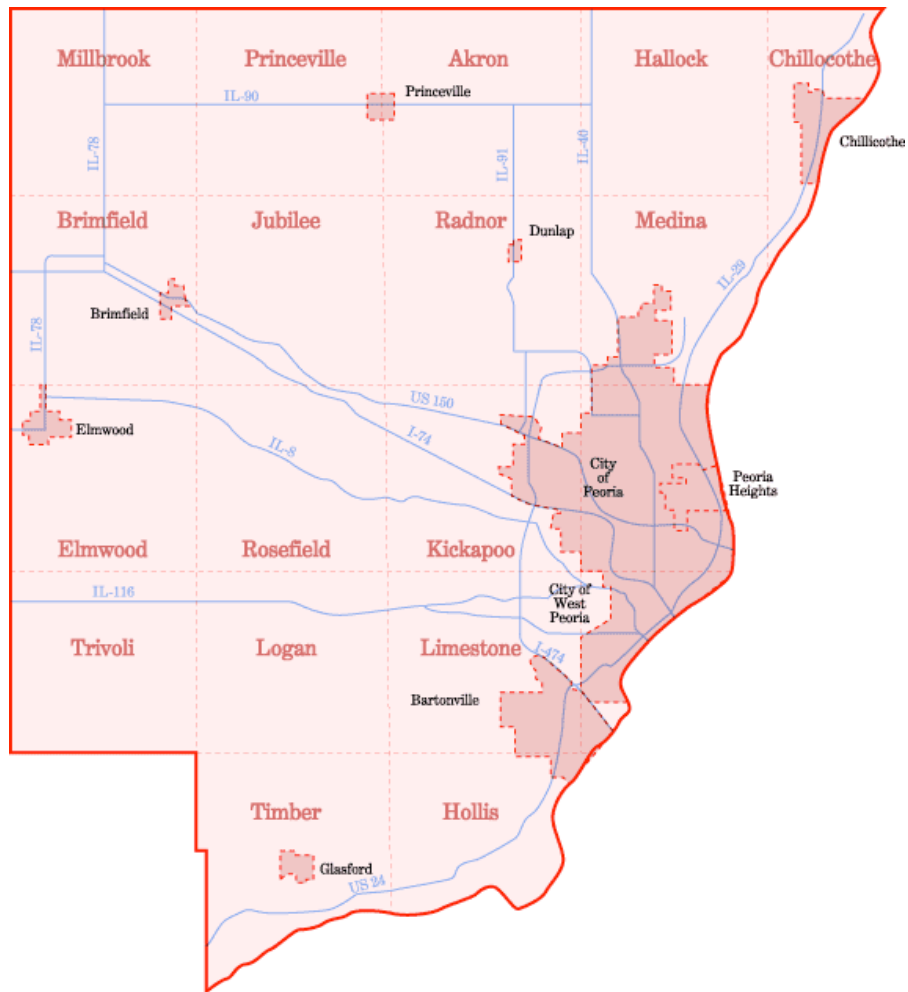


Peoria County, IL



Many operations in Peoria County have moved to a local SMR operated by Ragan Communications. Ragan runs a large EDACS system in concert with Tazewell County that also covers the whole Peoria area. Please see the Tazewell County Profile for more information on this system.

Peoria is contemplating an 800 MHz. trunked system, possibly using the "OpenSky" format.

Sheriff:

158.7300	186.2	Shf	F1	Dispatch, Repeats 153.8000
158.7900	186.2	Shf	F3	Repeats 154.7700
159.2100		Shf		Base/Mobile
154.8750	100.0	Shf		"ISPERN 2" County Mutual Aid net
155.5200	110.9	Shf		Link to State Police
155.5950		Shf		Base/Mobile
155.6700	186.2	Shf		Chillicothe PD
154.7100		Shf		Mobiles
156.0300		Shf		Mobiles
039.5000	000.0	Shf		Old Low band Sheriff Net
039.6600	000.0	Shf		Old Low Band mobiles

County Jail and Courthouse:

460.0250	100.0	Shf	Courthouse
460.1250	100.0	Shf	County Jail
460.2250	100.0	Shf	County Jail
460.2750	000.0	Shf	Mobile Extenders
453.1875		Shf	Mobile Extenders
458.0125		Shf	Mobile Extenders
458.5875		Shf	Mobile Extenders
453.0125		Shf	Jail Portables
453.5875		Shf	Jail Portables
458.1875		Shf	Jail Portables

ESDA/EMA:

154.2950	186.2	EMA	Countywide EMA Ops, Repeats 153.755 PL 100.0 (E) & 186.2 (W)
155.0250		EMA	Statewide ESMARN Net
155.0550	000.0	EMA	Statewide IREACH Net
155.9250	100.0	EMA	Operations
458.7125		EMA	
039.5800		EMA	
039.9000		EMA	Peoria Area EMA Net (Also used in Woodford County)
045.2800		EMA	State EMA Net
045.4000		EMA	State EMA Net
045.4400		EMA	State EMA Net
045.5600		EMA	State EMA Net
047.4600		EMA	
047.5000	000.0	EMA	
155.1600			
155.2050			
155.2650			
155.2800			
462.9500			

County Fire Operations: *(Used by most fire departments in the County)*

154.3700	167.9	Fire	F1	County Fire Net Dispatch
154.2650	210.7	Fire	F2	IFERN
154.1750	167.9	Fire	F3	Fireground
154.2950	186.2	EMA		Countywide EMA Ops, Repeats 153.755 PL 100.0 (E) & 186.2 (W)
153.9500	167.9	Fire		Fireground
154.1300	100.0	Fire		Fireground
155.2200	167.9	EMS		"C-MED" Ambulances
462.9750	192.8	Fire		Simulcasts 154.3700 County Fire Ops

Other Operations:

155.0550	000.0	Shf	IREACH
453.4000	136.5	Hwy	Highway Department
151.0250		Hwy	Highway Department

Township Highway Departments:

Akron		Kickapoo		Richwoods
Brimfield		Limestone	453.6250	Rosefield
Chillicothe	155.9550	Logan		Timber
Elmwood		Medina		Trivoli
Hallock		Millbrook		West Peoria
Hollis		Princeville		
Jubilee		Radnor		

City of Peoria (Police Patrol by Peoria PD, Fire by Peoria FD)

Many City functions use the Ragan SMR, including Public Works, ESDA, Animal Control and Streets.

460.0500	100.0	Police	“Prep1” Dispatch (PL 97.4 also reported)
460.2500	173.8	Police	“Prep2” Records
460.3250	100.0	Police	“Prep3” Events
460.3750	100.0	Police	Detectives
460.3500		Police	Detectives & Airport PD
158.7900	186.2	Police	Sheriff’s Net, Repeats 154.7700
158.7300	186.2	Police	Sheriff’s Net, Repeats 153.8000
154.8750	100.0	Police	Countywide
158.8500		Police	Command
155.7750	100.0	Fire	Station Alerting
154.1450	100.0	Fire	F1 Operations
154.0700	100.0	Fire	F2 Fireground
153.8900		Fire	F3 Fireground
154.3700	167.9	Fire	F4 County Net
153.9500	167.9	Fire	Fireground
155.2200	167.9	EMS	“C-MED” Ambulances
155.0400	100.0	LG	Local Government Paging
158.8800	100.0	LG	Parks
155.8800		LG	
155.9250	100.0	LG	
453.5000		LG	
155.0250	000.0	EMA	EMA/ESDA Statewide ESMARN net
155.0550	000.0	LG	IREACH
155.8050		EMA	Mobiles
047.5000	000.0	EMA	County EMA Net
045.4000	103.5	EMA	State EMA Net
045.4400	103.5	EMA	State EMA Net
045.5600	000.0	EMA	State EMA Net
451.9500		LG	Greater Peoria Sanitary District ops
453.3250	173.8	LG	Greater Peoria Mass Transit District
453.7500	173.8	LG	Greater Peoria Mass Transit District
453.2500		LG	Peoria Housing Authority
159.0900	D351	School	School Police
151.6850		School	School District
461.3250		School	District 150
453.8000		School	Board of Education
453.3000		School	Board of Education
452.6250		School	Board of Education
451.9875		School	Board of Education
452.0500		School	Special Education Association
467.0625		School	Robert Morris College
467.1375		School	Robert Morris College
854.8875		Utility	Illinois-American Water Company
855.9125		Utility	Illinois-American Water Company
156.1650		Utility	Pleasant Valley Public Water District
857.9625		City	Possible Future trunked System (858.9625, 859.9625, 860.9625)

Peoria County Cities and Villages: *Several police agencies in the Peoria and Tazewell County area use 460 MHz. repeaters. Most have neighboring agencies channels available for mutual aid. Only main channels are listed for each community.*

The following channels are common for all Fire and EMA units in the county and are not listed individually for each town:

154.3700	167.9	Fire	F1	County Fire Net Dispatch
154.2650	210.7	Fire	F2	IFERN
154.1750	167.9	Fire	F3	Fireground
154.2950	186.2	EMA		Countywide EMA Ops, Repeats 153.755 PL 100.0 (E) & 186.2 (W)
153.9500	167.9	Fire		Fireground
154.1300	100.0	Fire		Fireground
155.2200	167.9	EMS		"C-MED" Ambulances

Bartonville *(Police Patrol by Bartonville PD, Fire by Bartonville FPD)*

460.1000	203.5	Police		Bartonville PD Dispatch
159.2100	167.9	Police		Local Alternate
154.1000	167.9	LG		Public Works, Fire, ESDA, Police
151.0250		LG		Streets
151.4600		Fire		Tuscarora FPD Ops

Bellevue *(Police Patrol by Peoria County Sheriff, Fire by Limestone Twp FPD)*

Brimfield *(Police Patrol by Peoria County Sheriff, Fire by Brimfield FPD)*

151.4600		Fire		Brimfield FPD Ops
----------	--	------	--	-------------------

Chillicothe *(Police Patrol by Chillicothe PD, Fire by Chillicothe FD)*

155.6700	186.2	Police		Chillicothe PD Dispatch
158.7300	186.2	Police		County Net, Repeats 153.8000
154.3250		Fire		Chillicothe FD
159.4425		Fire		Mobile Extenders
155.2650	167.9	EMS		Ambulance Dispatch
155.2050		EMS		Rescue 33 Ambulance Service
154.0850		LG		Public Works
155.9550		LG		Public Works
154.0850		LG		Chillicothe Sanitary District
155.9550	000.0	LG		Chillicothe Sanitary District
452.7250		School		Illinois Valley Central HS

Dunlap *(Police Patrol by Peoria County Sheriff, Fire by Dunlap CFPD)*

The Village of Dunlap, Dunlap EMA and the Dunlap Community Fire Protection District cooperate in a progressive communications plan and have licenses for just about all public safety operations and Mutual Aid channels in the county and then some. The Fire District and EMA units have radio capabilities to use most local police and fire frequencies.

153.7700		Fire		Mobiles
154.4150		Fire		Mobiles
460.6000		Fire		Mobile Extenders
460.6125		Fire		Low Power (Also 465.5750, 465.6000, 465.6125, 465.6250)
155.1150		EMA		Operations
158.9250		EMA		Mobiles
047.4600		EMS		Rescue Squad/EMS
155.2650		EMS		Rescue Squad/EMS
155.2800		EMS		Rescue Squad/EMS
462.9500		EMS		Rescue Squad/EMS
151.0250		LG		Public Works

Elmwood	<i>(Police Patrol by Peoria County Sheriff, Fire by Elmwood FPD)</i>
462.9750	EMS BYE Ambulance Service
155.8050	LG Public Works
Glasford	<i>(Police Patrol by Peoria County Sheriff, Fire by Timber-Hollis FPD)</i>
158.8200	LG Village Operations
151.4000	Fire Timber Hollis FPD Operations
451.0875	Utility T.L. Public Water District
Hanna City	<i>(Police Patrol by Peoria County Sheriff, Fire by Logan-Trivoli FPD)</i>
151.3700	Fire Logan-Trivoli FPD
Kingston Mines	<i>(Police Patrol by Peoria County Sheriff, Fire by Timber-Hollis FPD)</i>
Mapleton	<i>(Police Patrol by Peoria County Sheriff, Fire by Logan-Trivoli FPD)</i>
151.3700	Fire Logan-Trivoli FPD
Norwood	<i>(Police Patrol by Peoria County Sheriff, Fire by Limestone FPD)</i>
Peoria Heights	<i>(Police Patrol by Peoria Hts PD, Fire by Peoria Hts FD)</i>
460.5250	131.8 Police
460.2750	Police Mobile Extenders
158.7900	186.2 Police Sheriff's Net, Repeats 154.7700
158.7300	186.2 Police Sheriff's Net, Repeats 153.8000
154.8750	100.0 Police Countywide "ISPERN 2"
156.0900	Police Mobiles
155.7150	167.9 LG Public Works
Princeville	<i>(Police Patrol by Peoria County Sheriff, Fire by Elmwood FPD)</i>
155.2650	EMS Rescue Squad
155.2050	EMS Rescue Squad
158.7750	LG Village Operations
Rome	<i>(Police Patrol by Peoria County Sheriff, Fire by Dunlap CFPD)</i>
Trivoli	<i>(Police Patrol by Peoria County Sheriff, Fire by Logan-Trivoli FPD)</i>
151.3700	Fire Logan-Trivoli FPD
West Peoria	<i>(Police Patrol by Peoria County Sheriff, Fire by West Peoria FPD)</i>
151.6250	Fire W. Peoria FPD
460.6375	Fire Fire Mobile Extenders
465.6375	Fire Fire Mobile Extenders
458.6125	EMS Ambulance Mobile Extenders

Methodist Medical Center (Peoria)		464.7250		
155.2350		464.7750	123.0	Maintenance
155.2800		463.7250		
451.3000		467.8125		
461.2000	D251	451.3250		Student Activities
463.2500	D072	464.5000		Athletics
464.0750	D072	467.8125		Athletics
464.3750	D664			
464.4000				
Proctor Hospital (Peoria)				
461.8500				
464.1750				
464.2250				
464.8750				
St. Francis Medical Center (Peoria)				
155.2800				
159.5100				
452.2250				
452.8000				
460.9500				
461.9000	103.5			
462.7500				
462.8250				
463.8000				
Bradley University (Peoria)				
463.2250	100.0			
		Northwoods Mall		
		464.8125	D174	Security/Maintenance
		Peoria Chief's (Minor League Baseball)		
		451.1250	D114	O'Brien Field
		461.8250	D654	Parking
		467.9000	D114	Pep Leaders
		467.9125	D526	O'Brien Field ops
		469.5000	D464	O'Brien Field ops
		469.2625	D325	O'Brien Field Admin
		Peoria Civic Center / Peoria Rivermen (Minor League Hockey)		
		464.3250	D664	
		464.3500	D664	
		464.3750	D664	Concessions
		464.4250	D664	
		464.4750	D664	Housekeeping
		464.5250	D664	
		461.8250	D654	Parking

Railroads in Peoria County:

BNSF runs the former ATSF Chillicothe Sub thru Chillicothe and Edelstein using 160.650 for Road operations.

Canadian National runs its former Illinois Central line from Lincoln to Peoria via Pekin and Delavan using 160.9200 for Road operations.

The **Illinois Midland** runs from Pekin to Springfield using 160.9500 for Road operations and 160.2900 for Yards.

Norfolk Southern runs its former Conrail line from Bloomington thru East Peoria using 160.8000 for Road operations.

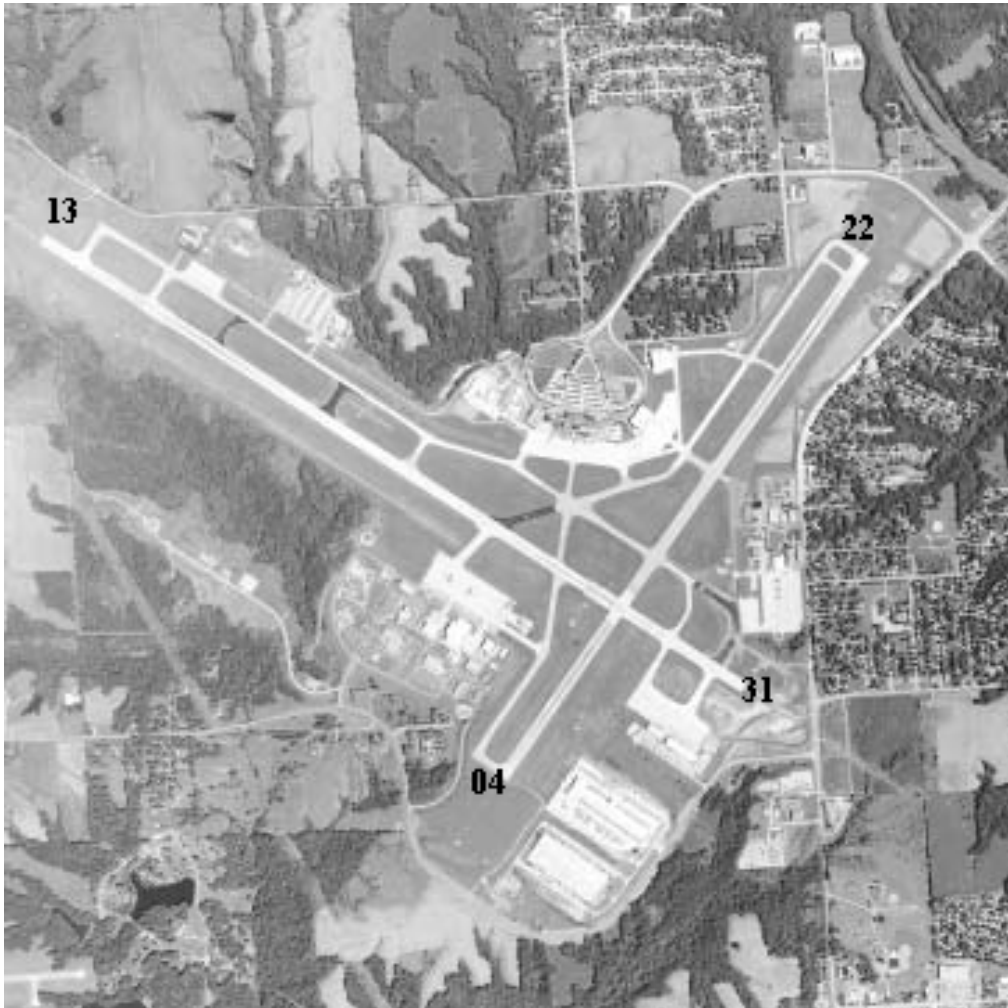
The **Peoria and Pekin Union** runs thru the Pekin area and uses 160.4700 for Road, 160.5300 and 161.2350 for Yards.

The **Toledo, Peoria and Western** runs from Peoria east thru Washington, using 161.4000 for Road operations and 161.3100 for yards.

Union Pacific runs its former CNW line from Peoria to Springfield via Pekin and Green Valley using 161.2650 for Road operations and 160.4550 for Yard and MOW.

Greater Peoria Airport

460.3500		Police	Peoria Airport PD		
154.3700	167.9	Fire	F1	Airport FD, County Fire Net Dispatch	
154.2650	210.7	Fire	F2	IFERN	
154.1750	167.9	Fire	F3	Fireground	
154.2950	100.0	EMA		County EMA Net, Repeats 154.7550	
153.9500	167.9	Fire		Fireground	
154.1300	100.0	Fire		Fireground	
155.2200		EMS		Rescue Squad	
453.0875		Fire		Airport FD Mobile Extenders	
453.2750	100.0	LG		Airport Operations	
155.0250	000.0	EMA		EMA/ESDA Statewide ESMARN net	
155.0550	000.0	LG		IREACH	
119.1000		Tower / CTAF	252.9000		Tower
121.8500		Ground Control	348.6000		Ground
126.1000		ATIS	282.2000		ATIS
125.8000		Peoria Approach (N)	269.2000		Peoria Approach (N)
119.9500		Peoria Approach (W)	326.2000		Peoria Approach (W)
122.9500		Unicom	141.1500		National Guard
280.9000		National Guard	032.3000		National Guard



Change Log:

Date	Initials	Items/Page Nr of changed items:
11-20-11	rc	Updated Peoria Chiefs